

Koinonia

Authentic Fellowship

“No Man is an Island,” this is one of the most popular sayings of our time. I remember, I did sing this during High School days and it still brings me back to its great truth that ‘no man can live alone in this world, no man can live only for himself’. This subject is about this truth and it exactly what we need to know in this world that is independent from one another. We need KOINONIA, and that is to say we need each other.

This world has much to offer except one of true fellowship. The churches today focuses on many different approach, and often time they focus on programs, style and gimmicks. But what people need today is authentic fellowship, people need to belong, they need to belong to God’s family. What better way to introduce the Body of Christ then in a Koinonia setting, where they can grow to be the person God wants them to be.

This is why “Koinonia” is an important factor in our Christian walk. The Greek “fellowship is the term *koinonia*. “This is the word that early Christians used to describe the bond that held them together. It wasn’t shallow, meaningless pat on the back. It was an authentic display of love and acceptance, care and compassion, support and forgiveness – all those things that characterized the Lord Jesus Christ when He walked on earth.”

What does Koinonia mean to us today? I like how Dr. Charles Swindoll defines a Koinonia, he said; “it is seeking to share with others what God has made known to you, while letting fellow brethren share with you what they know of him as a means to finding strength, refreshment and instruction for one’s soul. It is also an expression of both love and humility. It springs from the desire to bring benefit to others and it carries the desire to edify and help each other.” (Charles Swindoll, *Koinonia ...Authentic Fellowship*, 1995)

This Manual will give a clear picture on what a *koinonia* is all about. How to be the best Koinonia leader you can be. And it will also give you an understanding on the importance of what a KOINONIA should be in your churches. I hope you will be challenged as well as excited to lead this great endeavor. A *Koinonia* awaits you.

Manju B. Yu

WIN-Singapore

Koinonia Objectives

WARMER

through Fellowship

DEEPER

through Discipleship

STRONGER

through Worship

BROADER

through Ministry

LARGER

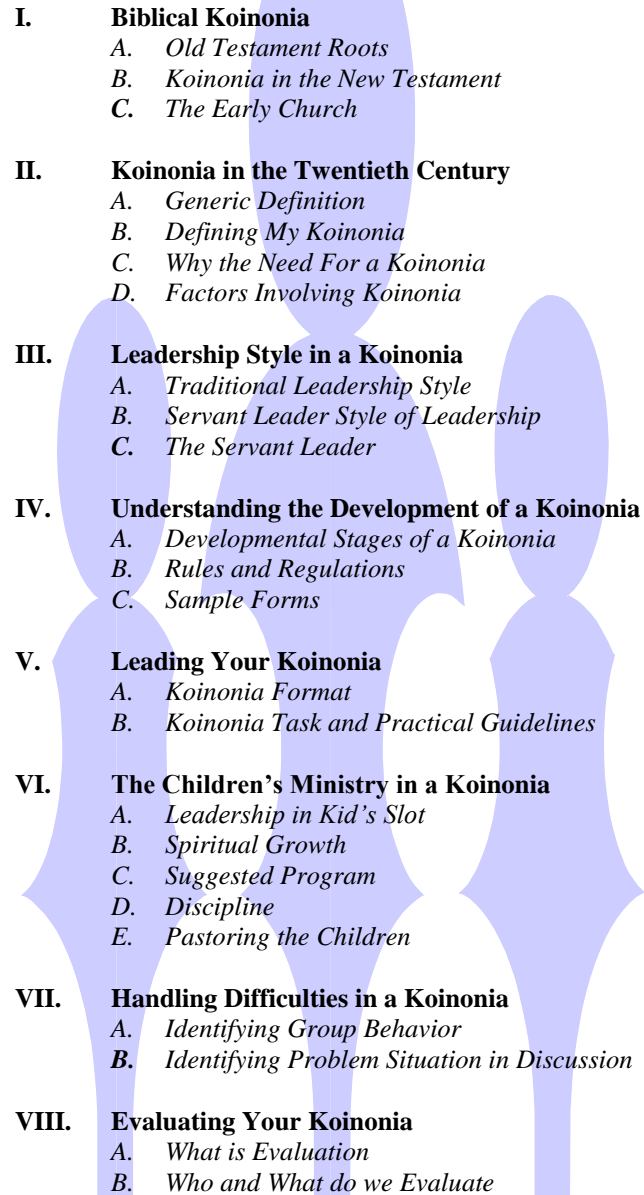
through Evangelism

WHY KOINONIA?

Because Koinonia...

- ◆ Is Biblical
- ◆ Allows Exponential Growth
- ◆ Allows the Holy Spirit to work in the life of each koinonia members in a special way
- ◆ Allows High Mobilization of members for ministry
- ◆ Allows Fast Expansion of servant leaders to be train by developing and training them in a directed and systematic manner
- ◆ Allows members to bring about Change in their lives that will glorify God
- ◆ Allows Discipleship in context of Body Life
- ◆ Allows the church to reach out through Zone Evangelism.

Overview

- 
- I. Biblical Koinonia**
 - A. *Old Testament Roots*
 - B. *Koinonia in the New Testament*
 - C. *The Early Church*

 - II. Koinonia in the Twentieth Century**
 - A. *Generic Definition*
 - B. *Defining My Koinonia*
 - C. *Why the Need For a Koinonia*
 - D. *Factors Involving Koinonia*

 - III. Leadership Style in a Koinonia**
 - A. *Traditional Leadership Style*
 - B. *Servant Leader Style of Leadership*
 - C. *The Servant Leader*

 - IV. Understanding the Development of a Koinonia**
 - A. *Developmental Stages of a Koinonia*
 - B. *Rules and Regulations*
 - C. *Sample Forms*

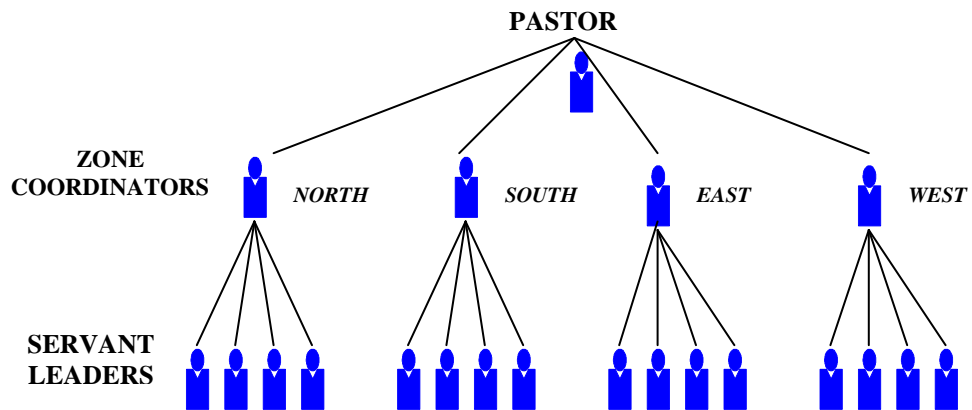
 - V. Leading Your Koinonia**
 - A. *Koinonia Format*
 - B. *Koinonia Task and Practical Guidelines*

 - VI. The Children's Ministry in a Koinonia**
 - A. *Leadership in Kid's Slot*
 - B. *Spiritual Growth*
 - C. *Suggested Program*
 - D. *Discipline*
 - E. *Pastoring the Children*

 - VII. Handling Difficulties in a Koinonia**
 - A. *Identifying Group Behavior*
 - B. *Identifying Problem Situation in Discussion*

 - VIII. Evaluating Your Koinonia**
 - A. *What is Evaluation*
 - B. *Who and What do we Evaluate*

Structure



EXAMPLE OF EXISTING KOINONIAS

North Zone

1. YISHUN
2. KHATIB
3. WOODLAND
4. HOUGANG

West Zone

5. BUKIT PANJANG
6. DUMEZ, TUAS
7. JURONG EAST
8. JURONG WEST
9. HOLLAND
10. BUKIT BATOK
11. YEW TEE

East Zone

12. PASIR RIS
13. TAMPINES 1
14. TAMPINES 2
15. MARINE CRESCENT
16. KALLANG
17. BEDOK

South Zone

18. S'PORE GEN. HOSPITAL
19. SPOTTISWOOD PARK
20. PASIR PANJANG
21. GOODWOOD HILL